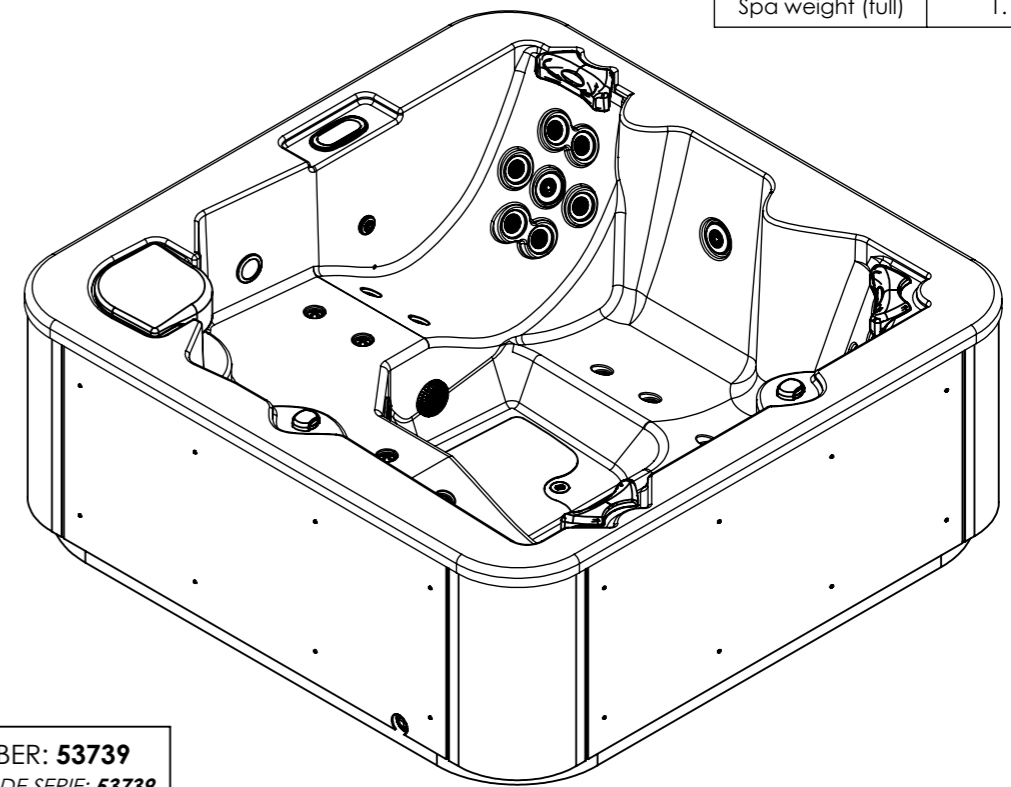
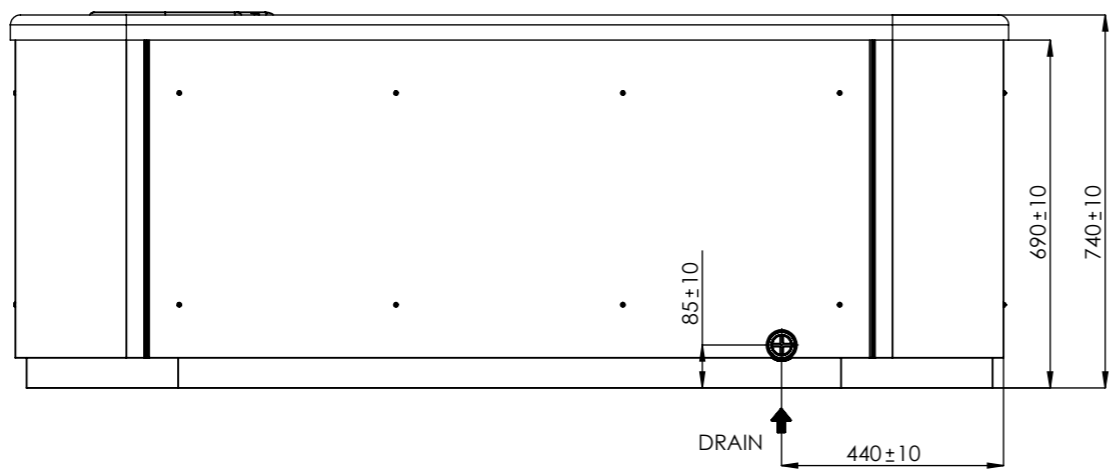
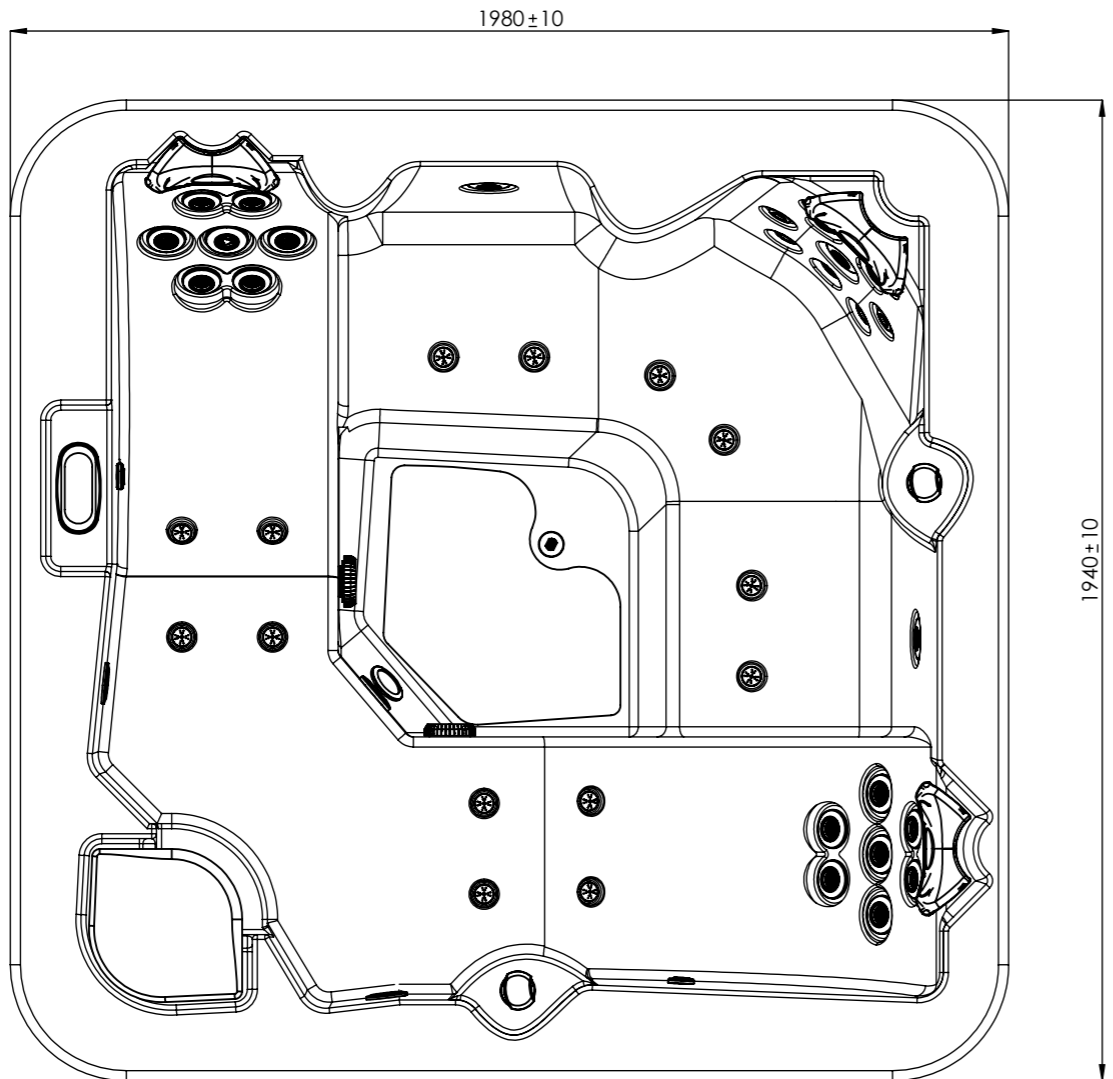


General specifications	
Spa weight (empty)	246 Kg
Spa weight (full)	1.181 Kg



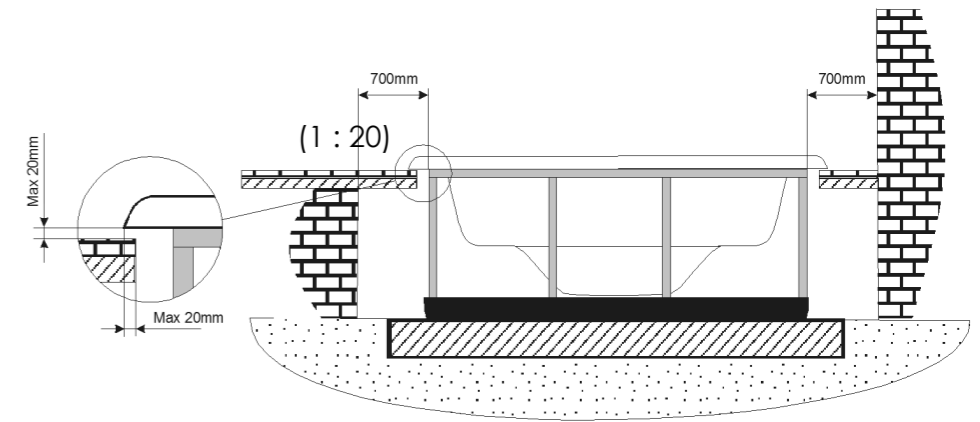
VALID FROM SERIAL NUMBER: **53739**  
VALIDO A PARTIR DEL NÚMERO DE SERIE: **53739**

ELECTRICAL BOARD CONNECTIONS ACCESS



**Inground option**

**WARNING:**  
It's essential to keep a minimum clearance access of **700mm** all around.



According to our policy of continuous improvement, dimensions, features or components of this product can be partially or completely changed without prior notice.  
It's Customer responsibility to verify that this is the last version of the drawing

12	14/12/2018	D.Castillo	Spa weight added.
11	18/06/2018	A.Miquel	Changing CMP jets.
10	05/05/2017	O. Faura	Changing of electronic parts references.
09	22/10/2014	I.Pozo	Change scale and new spare template
08	07/03/2014	X.Codina	New templates
Change No.	Date	Name	Modification

Remarks Dimensions in mm. General Tolerances +/- 10mm			<b>COMMERCIAL</b>			
Drawn	13/11/2013	X.Codina	<b>IBERSPA</b>	Part Number	Rev.	First Angle Projection
Checked	--	--		41578	12	
Scale 1:15	General Tolerance DIN 7168 ISO 2768g					
Sheet 1/2						